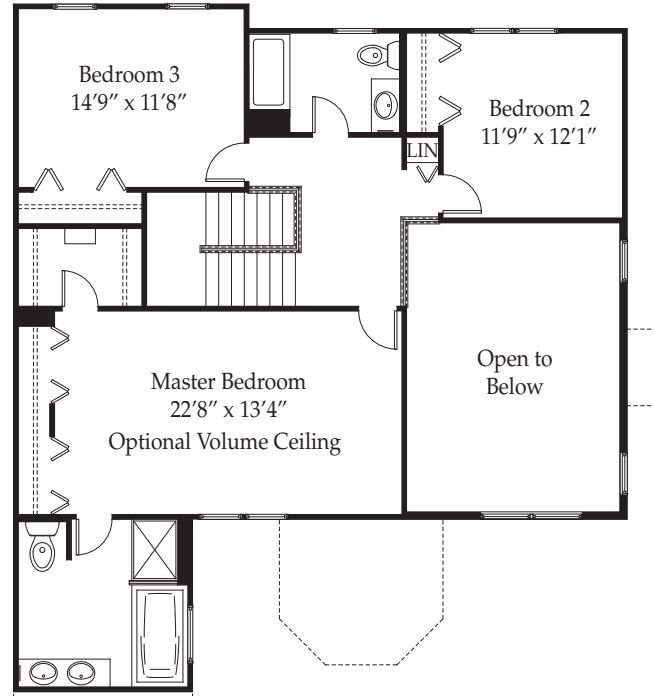
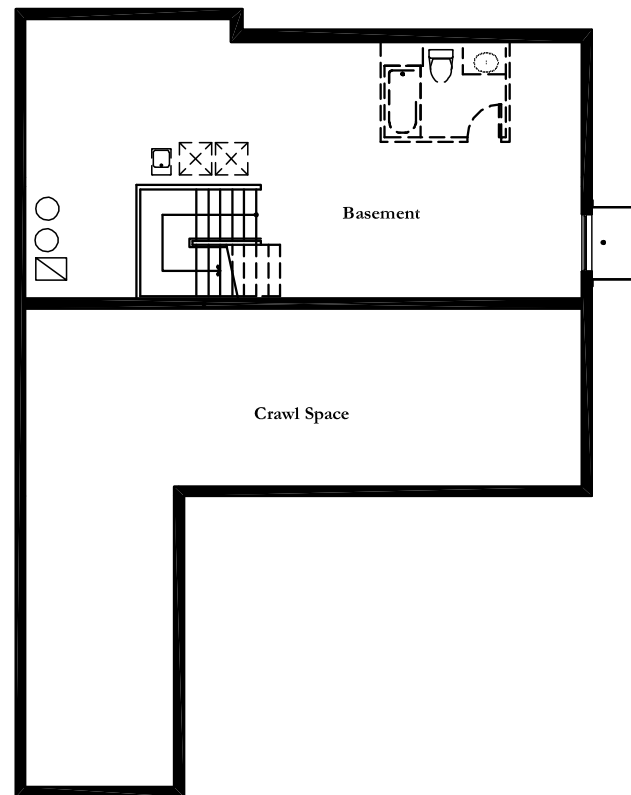


First Floor



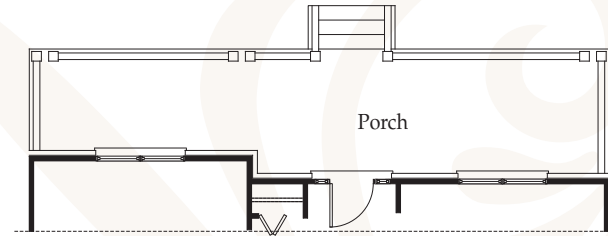
Second Floor



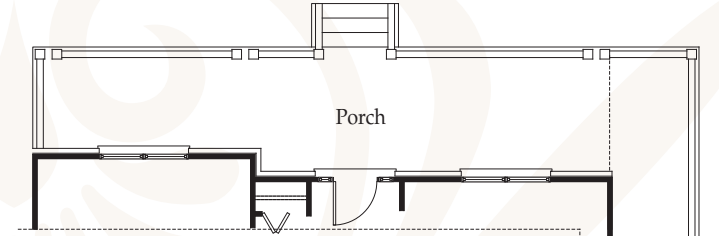
Basement

The Camelot

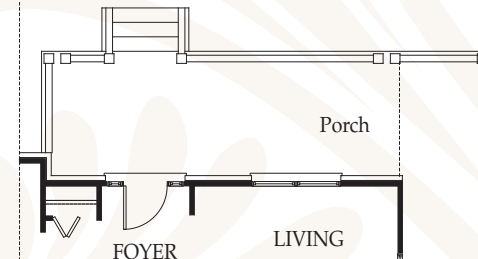
West Point Possibilities



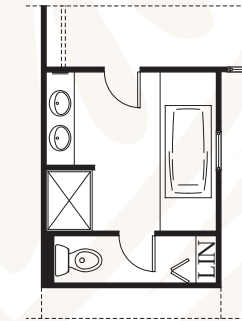
First Floor Plan Elevation B & C



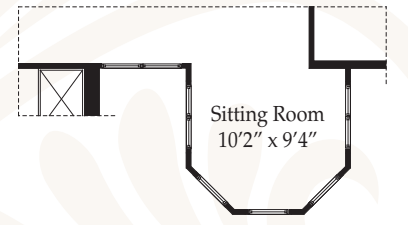
Optional Extended Porch Available with First Floor Plan Elevation B & C



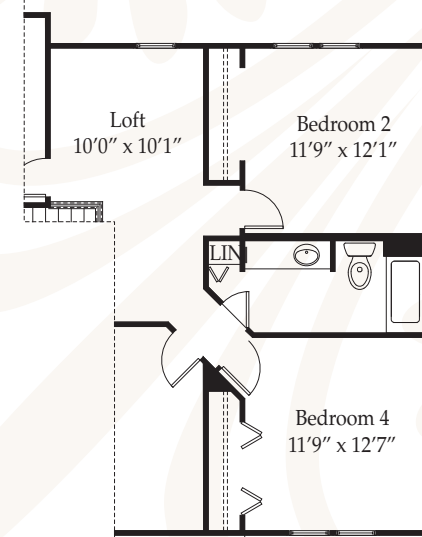
Optional Extended Porch Available with First Floor Plan Elevation A



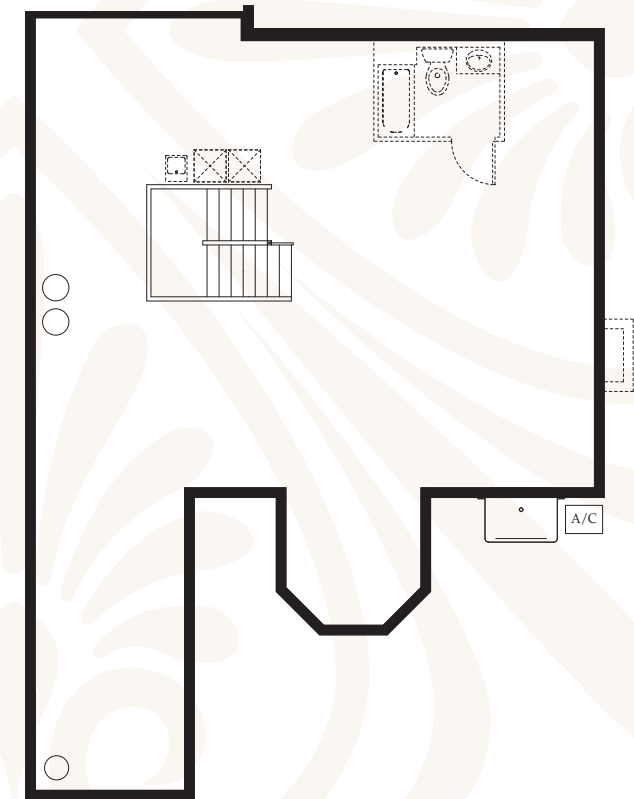
Optional Alternate Master Bath



Optional Sitting Room



Alternate Second Floor



Optional Full Basement

elevation A



elevation B



elevation C



An inviting porch in the front of the house extends the living space of this three to four bedroom home and helps families reconnect with a more leisurely era when people had time to meet their neighbors and build a sense of community. The center entry foyer flanked by a formal living room and dining room, leads directly to the large family room. There is a spectacular kitchen with plenty of elbowroom for family members to share cooking chores plus a spacious breakfast area that overlook the private garden. The idea of cocooning becomes more appealing if you choose to add a cozy sitting room to the second floor master suite. There are two additional bedrooms plus the possibility of enclosing the open space above the family room as a fourth bedroom.

The Camelot

*2,717 sq.ft.
3-4 bedrooms ~ 2-1/2 baths
attached 2-3 car garage
private garden*



The KINGSTON Single-Family Homes Series